

L-807 Wind Cone



COMPLIANCES

FAA AC 150/5345-27 (current edition)
ICAO: Annex 14, Vol. 1, para. 5.1.1
(Size 2 only)

ETL Certified



PRODUCT APPLICATION

The L-807 Wind Cone provides visual indication of wind direction and velocity at a location on an airfield. FAA Size 2 wind cones are used at the central location on the airfield. FAA Size 1 wind cones are used on smaller airfields and heliports.

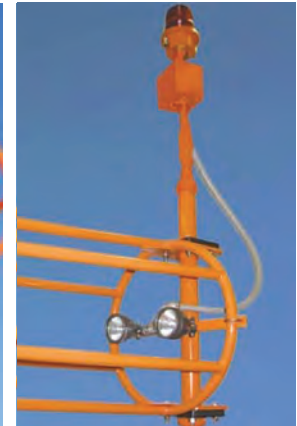
FEATURES

- Available externally lighted, internally lighted, or unlighted.
 - LED or halogen lamps.
 - All LED models feature:
 - 50,000 to 100,000 hour lamp life, virtually maintenance free.
 - Multiple lamp circuits for improved reliability.
 - 80-90% less power consumption than halogen lamps.
 - A long-life LED obstruction light.
 - Integral power-adaptor on series-circuit models.
 - An incandescent L-810 obstruction light is included on halogen lighted models.
 - Size 1 (18" x 8' long) or Size 2 (36" x 12' long) wind socks.
 - The pole is center-hinged, with 4" diameter steel on the bottom, and 3" diameter steel on the top.
 - A center-mounted braked winch allows 1-person maintenance.
- The four anchor bolts are a one-piece welded assembly, ready to drop in the ground.
 - The aluminum basket is welded, one piece, with pre-installed bearings.
 - Raincaps protect the bearings from weather.
 - The nylon sock is treated for rot, mildew and water repellency.
 - Powder coat painted international orange.

APPROACH LIGHTS & NAVIGATIONAL AIDS - 3.12



External LED Light



Internal Halogen Light



External Halogen Light



Internal LED Light

ORDERING INFORMATION

Part Number*	See Note	FAA Size	FFA Style	Power Source	Lamp Type	Total VA	Weight (lb.)	Replacement Lamp
L-807-S1-UN-NON-ON-N	N/A	1	II Unlighted	none	none	0	187	none
L-807-S1-EX-120-ON-5	N/A	1	I-A External	120VAC	LED	15	198	9200-0032
L-807-S1-EX-66A-ON-5	4	1	I-A External	6.6AMP	LED	50	197	9200-0034
L-807-S1-IN-120-ON-5	N/A	1	I-B Internal	120VAC	LED	30	200	9200-0038
L-807-S1-EX-120-ON-N	N/A	1	I-A External	120VAC	Halogen	191	196	3400-0122
L-807-S1-IN-120-ON-N	2	1	I-B Internal	120VAC	Halogen	316	198	3400-0100Regent
L-807-S1-EX-12-ON-5	N/A	1	I-A External	12VDC	LED	8	197	9200-0033
L-807-S1-IN-66A-ON-5	3	1	I-B Internal	6.6AMP	LED	137	198	9200-0039
L-807-S2-UN-NON-ON-N	N/A	2	II Unlighted	none	none	0	199	none
L-807-S2-IN-120-ON-5	N/A	2	I-B Internal	120VAC	LED	54	217	9200-0040
L-807-S2-EX-120-ON-5	N/A	2	I-A External	120VAC	LED	22	211	9200-0035
L-807-S2-EX-66A-ON-5	4	2	I-A External	6.6AMP	LED	54	210	9200-0037
L-807-S2-EX-120-ON-N	N/A	2	I-A External	120VAC	Halogen	191	208	3400-0122
L-807-S2-IN-120-ON-N	N/A	2	I-B Internal	120VAC	Halogen	416	213	3400-0100Regent
L-807-S2-EX-12-ON-5	N/A	2	I-A External	12VDC	LED	12	210	9200-0036
L-807-S2-IN-66A-ON-3	3	2	I-B Internal	6.6AMP	LED	157	218	9200-0031

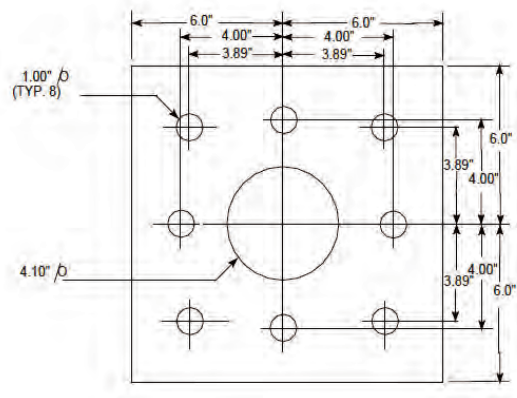
Notes:

1. Power consumption specifications include the L-810 obstruction light
2. This FAA Style cannot be ETL certified
3. Requires 200W L-830 transformer, sold separately
4. Requires 100W L-830 transformer, sold separately

*Manufactured by Hali-Brite Inc.

RENEWAL PARTS

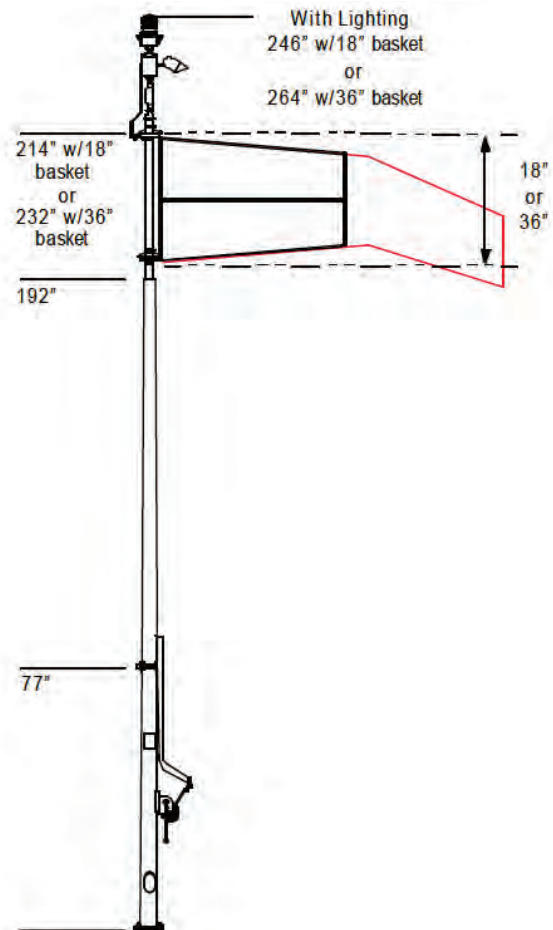
Description	Part Number
Wind Sock, Size 1 (18 inches diameter, 8 feet long, orange)	7400-0000-1
Wind Sock, Size 2 (36 inches diameter, 12 feet long, orange)	7400-0002



Base Layout

NOTE:
Only 4 Anchor Bolts Required

EXPLODED VIEW



6830 NW 16th Terrace • Ft. Lauderdale, FL 33309 USA
 Phone: 1.937.652.3500 • E-mail: AFLsales@HughesAndPhillips.com • www.HughesAndPhillips.com